

Instruction of HIFU machine



Warning

Dear User

Thanks for using our company's products, in order to fully make use of the products, We sincerely suggests follow:

1. please read the instruction in detail and keep it well for further reading and consulting.
2. Please follow the instruction to fit and operate and machine correctly.
3. Please dont remove and change any accessories of the machine.
4. It forbids others to open and remove the mainframe except the authorized people in the company.
5. It forbids others to change and maintain the machine except the professional people
6. Please contact us if there is any trouble during operation

1.Theory

High Intensity Focused Ultrasound (HIFU) directly delivers heat energy to skin and subcutaneous tissue that can stimulate and renew the skin's collagen and thus consequently improving the texture and reducing sagging of the skin. It literally achieves the results of a facelift or a body lifts without any invasive surgery or injections, moreover, an added bonus of this procedure is that there is no downtime. and also, it works equally well for people of all skin colours, in contrast to that of lasers and the intense pulse lights.

It's heating directly to deeper tissue, in order to lift the skin. It is performed in the office with only ultrasound gel applied to the skin. An ultrasound screen image allows the

physician to visualize the level of treatment before energy is applied to the targeted tissue. The treatment takes from 45 to 90 minutes depending on the area(s) treated.

Ultherapy a safe and effective non-invasive ultrasound (US) treatment that can lift and tighten facial skin and muscle without downtime. It is targeted for Lifting skin on the neck, under the chin, on the brow etc.

2.Advantages

- More than 50,000 shots according to quality inspection and clinical tests, ensuring that each shot effects into the right depth set by default.
- Equipped 5 heads (E1.5mm, 1.5mm, 3.0mm, 4.5mm, 13mm), precisely acting on different depths of the skin. The energy will skip the epidermis, leaving no damages.
- It will produce thermal effect to the dermal collagen fibers and stimulate the fat layer and SMAS. The result is far better than Thermage.
- The skin will be lifted and tightened at once, and effect will last for 12-24 months.
- There are no post-surgery down time and you can resume your normal activities immediately
- Easy to control and operate, no consumables, cost-saving.

3.Application:

- 1.Remove wrinkles on around forehead, eyes, mouth, etc.
- 2.Lifting and tightening both cheeks skin.
- 3.Improving skin elasticity and shaping contour.
- 4.Improving jaw line, reducing "marionette lines"
- 5.Tightening the skin tissue on forehead, lifting the eyebrows lines.

- 6.Improving skin complexion, making the skin delicate and bright
- 7.Match with injecting beauty like Hyaluronic acid, collagen, to resolve more aging problem
- 8.Removing neck wrinkles, protecting neck aging.

4.Why HIFU treatment is better than other treatment?

From shallow to deep facial structure are divided into:Epidermis,dermis, Subcutaneous fat,SMAS,muscles and bones.Traditional surgery face lift surgery is to suspend SMAS,achieving skin tightening and lift.Now using HIFU non-instructive methods can easily reach unprecedented treatment depth.

HIFU ultherapy depth is 1.5mm-4.5mm.Besides acting on fibrous SEPTA,ultherapy Can also act on deeper layer SMAS,the key point of traditional face lift surgery. Therefore, HIFU has broken the previous limit, is the first instrument for non-intrusive SMAS treatment. Every single HIFU energy point(TCP) under the skin can make the temperature reach 65-70C,is the strongest temperature of all non-invasive skin tightening device.

No surgery, No bleeding, No scars,

No trauma, No radiation, No side effects

5.Function&Accessories:



Cartridge(1.5mm,3.0mm,4.5mm,8.0 and 13mm optional)



For the transfer of frequency 4Mhz high intensity focused ultrasonic to the skin and subcutaneous tissue,ultrasonic penetrating the dermis depth of 13mm,direct access to the SMAS layer of subcutaneous tissue, forming “coagulation” area,treat body

For the transfer of frequency 4Mhz high intensity focused ultrasonic to the skin and subcutaneous tissue,ultrasonic penetrating the dermis depth of 4.5mm,direct access to the SMAS layer of subcutaneous tissue, forming “coagulation” area,treat thick skin, such as cheeks.

For the transfer of frequency 4Mhz high intensity focused ultrasonic to dermis skin tissue,ultrasonic penetrating the dermis depth of 3.0mm, specific responsibility to activate collagen of the dermis skin, effectively consolidate the outline lifting effect,also can improve coarse pores and reducing wrinkles.

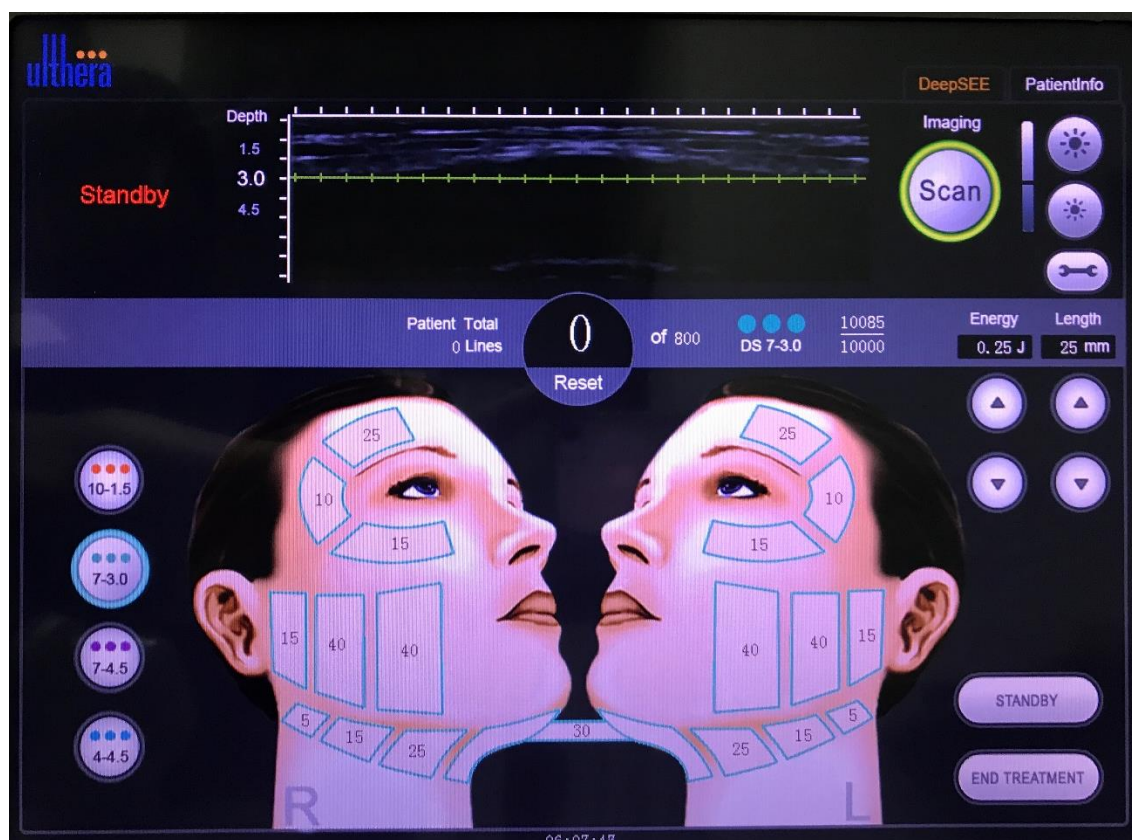
For the transfer of frequency 4Mhz high intensity focused ultrasonic to the tissue of the epidermis, ultrasonic penetrating the depth of 1.5mm, specific responsibility to activate the thin epidermis tissue.

6.Operation steps:

- 1.Clean the Skin.
- 2.Take a photo before treatment , and paint on the preoperative lifting location with make - up pencil .
- 3.According to the skin thickness to select appropriated transducer
- 4.Set suitable length , distance , energy ; we suggestion that the length adjust 25mm , distance adjust 2mm , energy generally start from 0.1J (according to customers need)
- 5.Applying ultrasonic plentiful gel as couplant between transducer and skin.
- 6.face lifting operate on the note of power line, forming a line thermal condensed node in the specified depth under skin when the transmitting button is pressed per time,operating continued on the powder line until the specified location transmission is completed. The treatment parts such as face, chin and both sides of neck.
- 7.don't operate on marginal mandibular nerve and supra or bital nerve.
- 8.no recovery period after treatment,daub some moisture product and make up immediately.
- 9.only once, the comprehensive effect will gradually appear in two or three moths, Some people may do this treatments several times.

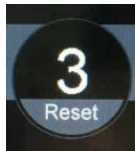
7.Screen

A.For Face

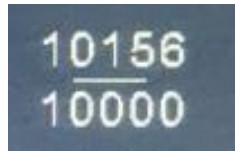




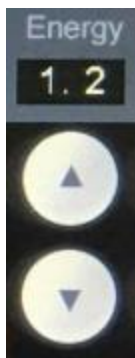
Brightness adjustment



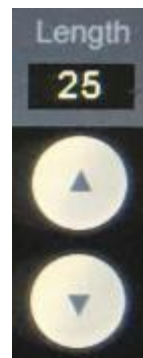
Shoot count



Total shots



Energy Adjustable(0.1~0.5J/CM2)



Length of dot(1-25 dots)

B.For Body(8 and 13mm,**this cartridge is optional**)

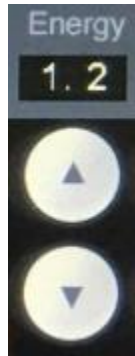




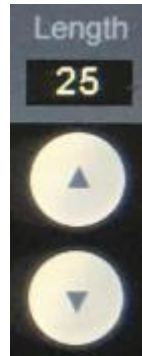
Shoot count



Total shots

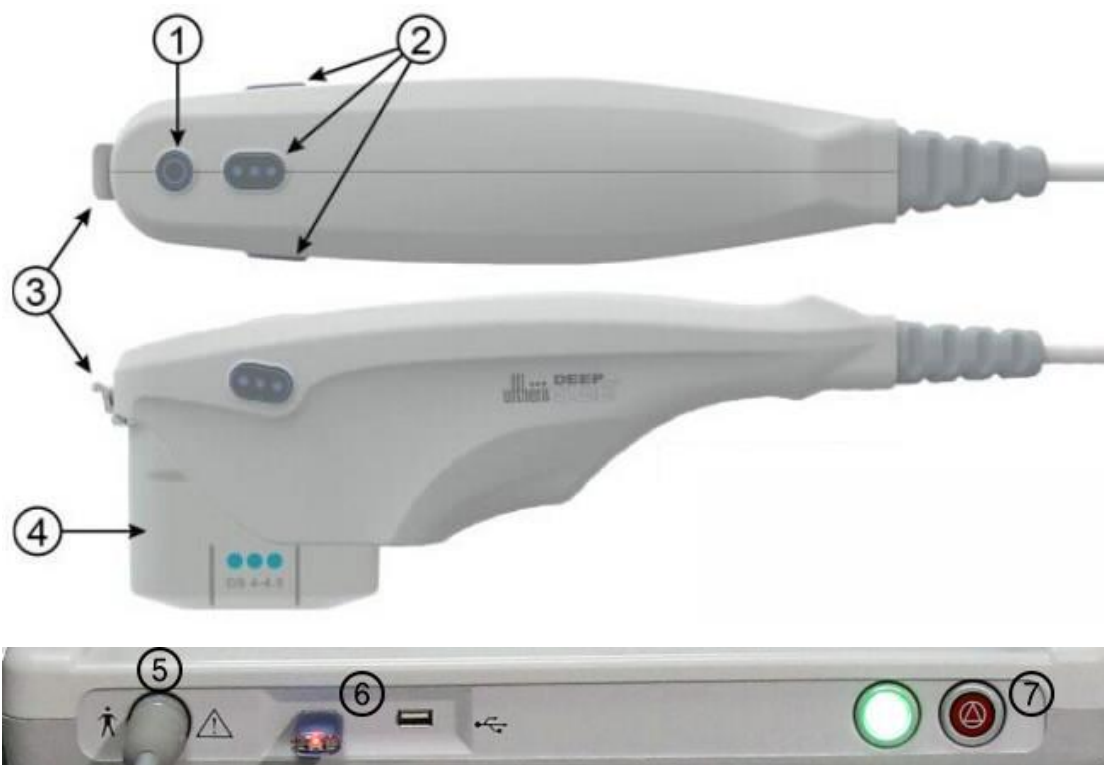


Energy Adjustable



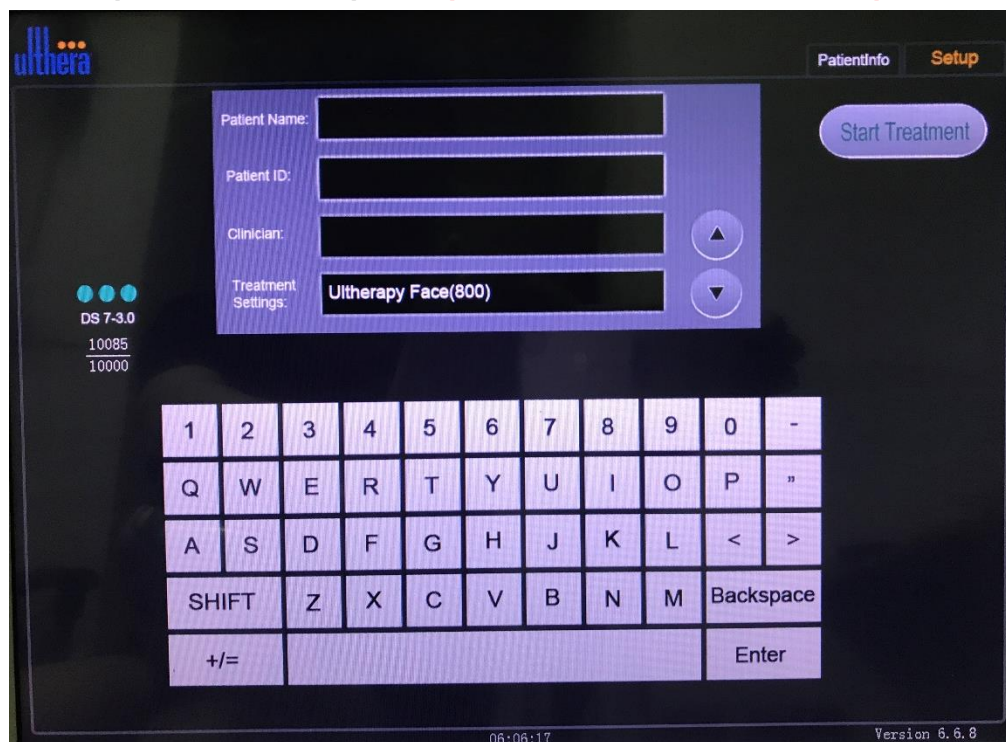
Length of dot(1-25 dots)

About How to start the machine,please check it as follow direction:



1. Firstly,insert the cartridge into the handpiece,press③ and push ④,and insert the handle into the HIFU machine ⑤
2. Secondly,Insert the USB into the USB connector⑥,and then press start button⑦ to open the machine.

When open the machine, please **press start treatment into the operation interface.**



3. Ready Button, Press ① to make machine in a ready status

4. Start Button, Press ② to start the treatment.

8.Parameters:

Model Name	HIFU machine
Power	800W
Voltage	110-240V,50/60HZ
Cartridge	3 pieces or 5 pieces
Shots	10000/each head
Energy Type	4MHZ/7MHZ
Length	5-25mm
Energy	(0.1j step)
Depth	1.5mm,3.0mm,4.5mm,8 and 13mm optional
Screen Size	15 color touch screen

9.Cautions after face and body lifting

- 1.strengthen the miniaturizing and sun scream.
- 2.Don't take any medicine and drink alcohol before and after 24hours, follow the nursing advice.
- 3.don't soak hot springs and have a steam bath.
- 4.It is normal that the skin feel fry after face lifting, pay attention to water replenishing.suggestions for applying mask at least three times a week.

10.Adapt to the crowd:

- 1.people who have facial skin sagging,wrinkles,skin aging and rough,reshape the face curve, effectively improve the eye region and neck tissue sag, posits.
- 2.Tightening the loose skin, removing real and false wrinkles,repair stretch marks.
- 3.Acnes
- 4.Systemic anti-aging(neck and back tightening and shaping, breast shape adjustment, waist and abdomen shaping and modifying,shape the buttocks and legs.
- 5.Suitable for a variety of wrinkles and deep wrinkles, forehead wrinkles, eye wrinkles,purify end, nasolabial fold, lip wrinkles, frown lines etc

11.Not meet the crowd:

People who implant a pacemaker or other similar electronic apparatus and implant other beauty products which it is dissolved by temperature.

12.Notes:

- 1, ultrasonic knife operation after a temporary slight swelling phenomenon is very normal. Note 1 week don't go hot sauna, yoga and other high-temperature environment after the operation, and is not recommended for exposure.
- 2, before the operation to maintain the skin, hair part clean, use the day cannot make- up, the current traces of make-up to clean.Please does not use hot water wash your face
- 3, three days (not more than the temperature of the water can be); note that replenishment, suggest a week at least apply mask 3 times.
- 4, a week does not eat soy sauce pigment heavy things, alcohol, spicy food.

13.Unsuitable for

- 1.implanted cardiac pacemaker or other similar electronic apparatus.
- 2.Pregnant women.
- 3.Over the past 9 months taking oral isotretinoin therapy were (Accutane / Roaccutane /Oratane).
- 4.Internal filler, if the face with gold implantation, it is not recommended to do.
- 5.Serious heart disease, diabetes, hyperthyroidism patients.
- 6.Operation wound not healed.
- 7.Patients with advanced cancer.The effect of unrealistic fantasies.

14.Equipment Maintenance:

- 1.gently, does not put the instrument placed in direct sunlight
- 2.regularly with a dry towel clean surface, machine parts surface dust and dirt.

- 3.before and after each use will probe cleaning and disinfection (wipe the surface with a 75% medical alcohol, prohibit the use of alcohol)
- 4.to prevent cross infection, each operation probe for personal use!

15. Addition Operation process and caution

Caution:Some areas on face can not shots,please remember the areas of the **Cross symbol** ✕

Operation

Here is the parameter **only for reference**

Half of Face:20-30 shots each area

Forehead:10 shots

